

ART16 | OUR FAVOURITE BOOTHS

20th May 2016 + Lorella Perri



Detail of Katrin Fridriks. Gracious Awakening, 2016. acrylic on canvas 100x100x10cm. Courtesy of Circle Culture. Gallery photo Fridriks workshop

ART16 is back to celebrate its 4th edition at Olympia, bringing together over 100 galleries from more than 30 countries. With a diverse and varied array of more than 1,000 outstanding artworks the fair represents one of London's must-see of the summer season. ART16 runs from 20th to 22nd May 2016.

Here are UV's favourite booths from the fair.

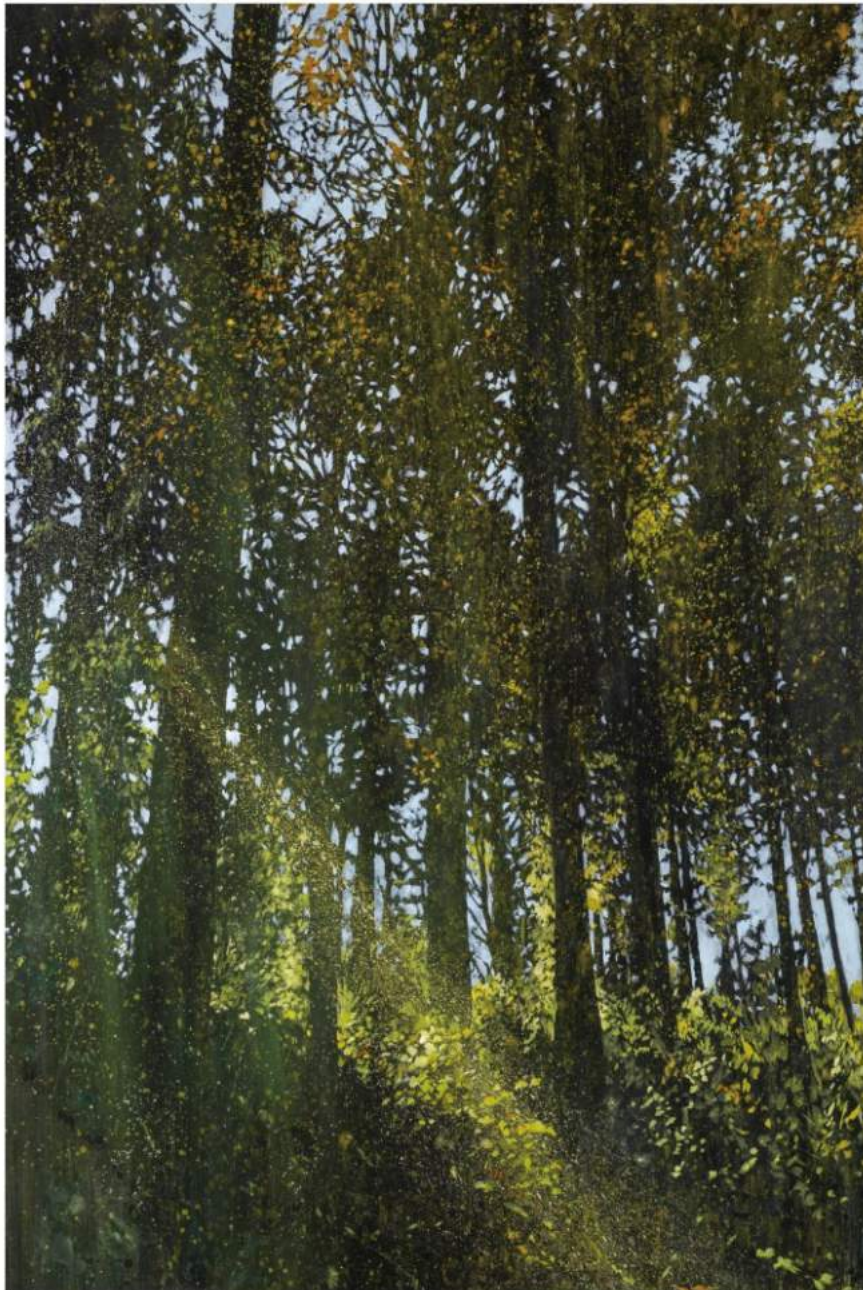
Liang Gallery

Located in Taipei, Liang Gallery is dedicated to promote worldwide the modern and contemporary Taiwanese art.

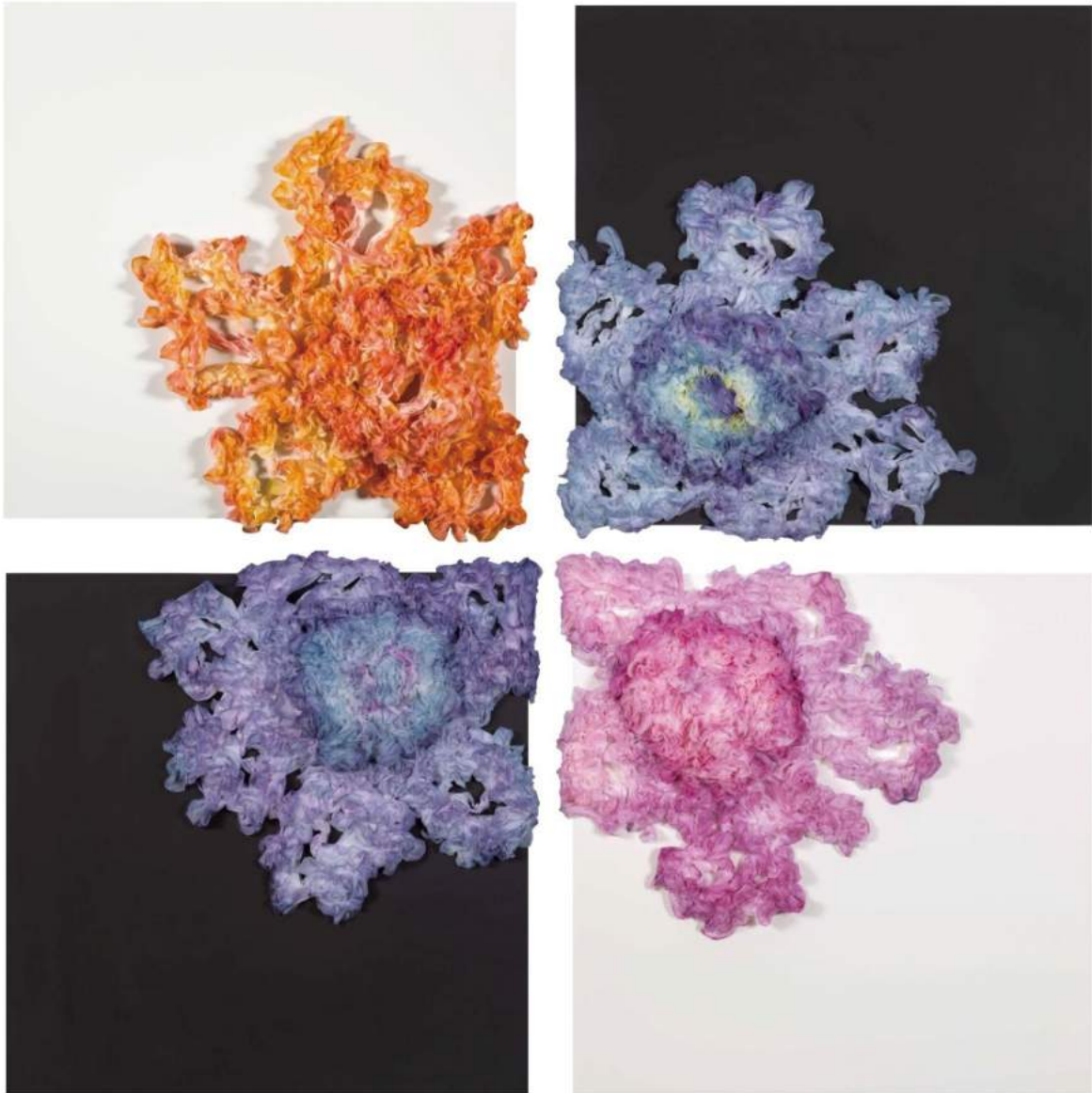


HSU Chang-Yu. Lights in the Forest-1, 2016 Lights in the Forest 1, 2016, 194 x 130 cm, Oil on Canvas

Born in Taipei in 1985, Hsu Chang-Yu moved to France in 2009, where she found the inspiration for the “Lights in the Forest” series. The painting reflects masterfully the game of shades and lights one can find deep into a forest, conveying also the artist’s deepest feeling about the meaning of life.



HSU Chang-Yu. Lights in the Forest-3, 2016 Lights in the Forest 3, 2016, 112 x 145.7 cm, Oil on Canvas



Smiling Face as a Flower - Inner Corner 2 1-4 , 2016, 50 x 50 x 12 (each), Mixed Media (facial mask, acid-free, stiffener, dye pigment, aluminium board)

Born in Chungli (Taiwan) in 1979, is renowned for her keen interest in creating stunning artworks with unusual materials. To “Smiling Face as a Flower – Inner Corner” series the artist used facial masks and dye pigments. Her works have been featured in numerous exhibition in Taiwan, China, Japan, Korea, USA, Canada and Italy.

More information about [Liang Gallery](#)

<https://www.ultravie.co.uk/blog/2016/05/20/art16-our-favourite-booths/>